

Section II.

TM 9-2320-280-24P-1

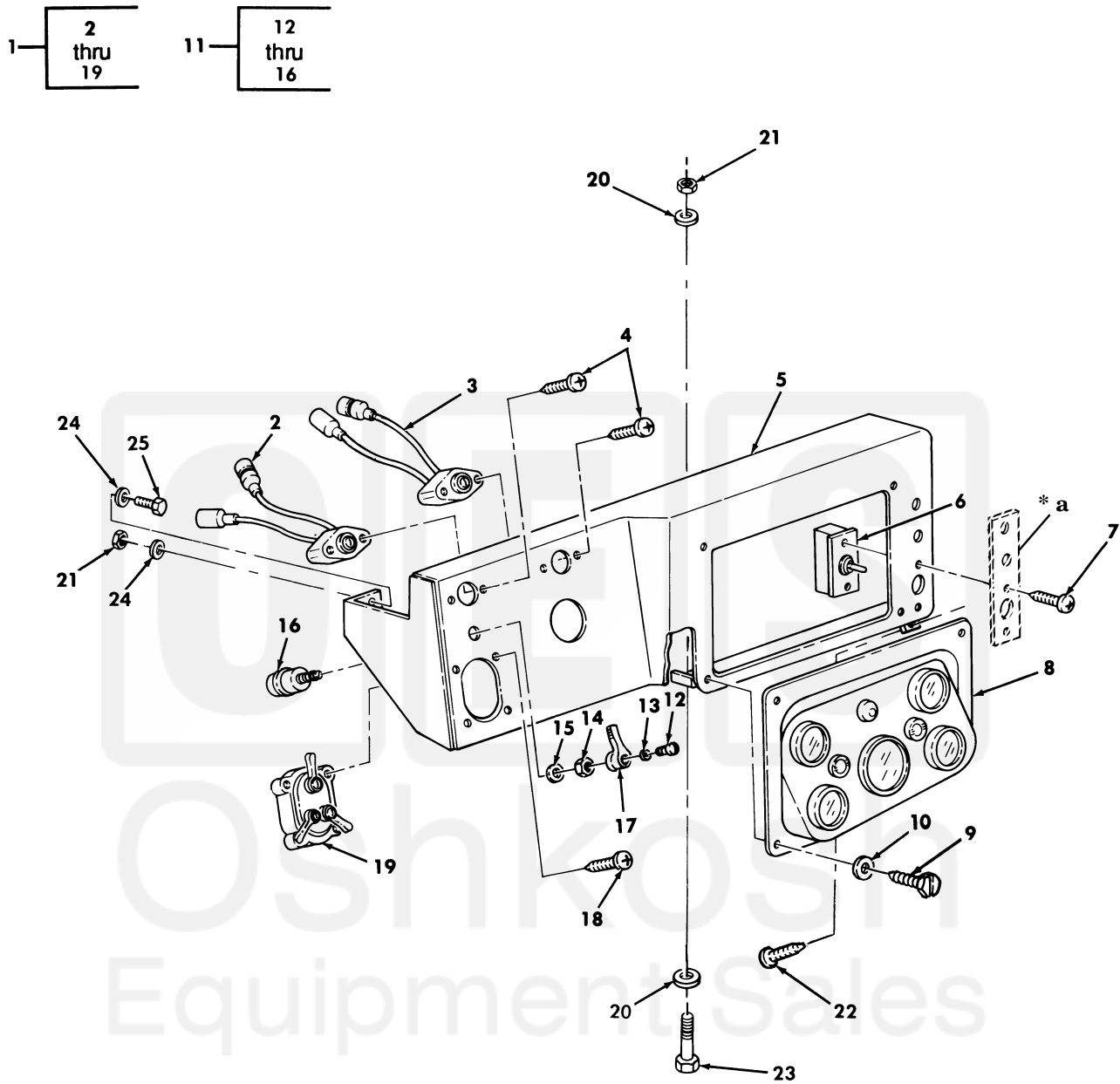


Figure 46. Instrument Panel Assembly and Mounting Hardware.

SECTION II		TM9-2320-280-24P				
(1)	(2)	(3)	(4)	(5)	(6)	(7)
ITEM NO	SMR CODE	NSN	CAGEC	PART NUMBER	DESCRIPTION AND USABLE ON CODES(UC)	QTY
GROUP 0607 INSTRUMENT OR ENGINE CONTROL PANEL						
FIG. 46 INSTRUMENT PANEL ASSEMBLY AND MOUNTING HARDWARE						
1	PFOOO	2510011872238	34623	12338477	PANEL,VEHICULAR OPE.....	1
2	PAOZZ	5980011868319	34623	5583395	.LIGHT EMITTING DIOD AMBER.....	1
3	PAOZZ	5980011870791	19207	12356703-1	.LIGHT EMITTING DIOD RED.....	1
4	PAOZZ	5305011389540	96906	MS51863-33	.SCREW,TAPPING #8-32 X 3/8.....	4
5	XAOZZ		34623	5581211	.PANEL INSTRUMENT.....	1
6	PAOZZ	5930002266429	96906	MS39061-4	.SWITCH,TOGGLE.....	1
7	PFOZZ	5305012645864	7X677	186965	.SCREW,ASSEMBLED WAS #10-32 X 3/4..	2
8	PFOZZ	2540011856117	19207	12338466	.INSTRUMENT PANEL,CA.....	1
9	PAOZZ	5305011878757	7X677	274707	.SCREW,MACHINE #10-24 X 1/2.....	4
10	PAOZZ	5310008098546	96906	MS27183-8	.WASHER,FLAT #10.....	4
11	PAOZZ	5930001345036	19207	11614131	.SWITCH,ROTARY.....	1
12	PAOZZ	5305006143423	96906	MS35265-43	..SCREW,MACHINE #8-32 X 3/8.....	1
13	PAOZZ	5310000453299	96906	MS35338-42	..WASHER,LOCK 1/2.....	1
14	PAOZZ	5310008326852	19207	5381233	..NUT,PLAIN,HEXAGON 1/2-20.....	1
15	PAOZZ	5310001941483	96906	MS35333-44	..WASHER,LOCK 1/2.....	1
16	XAOZZ		19207	11614131-1	..SWITCH.....	1
17	PAOZZ	5930001305349	19207	5381088	.HANDLE,SWITCH.....	1
18	PAOZZ	5305009953440	96906	MS35207-270	.SCREW,MACHINE #10-32 X 1.75.....	4
19	PAOZZ	5930003078856	96906	MS51113-1	.SWITCH ASSEMBLY.....	1
20	PAOZZ	5310012545352	34623	5593308	WASHER,FLAT 1/4.....	2
21	PAOZZ	5310000614650	96906	MS51943-31	NUT,SELF-LOCKING,HE 1/4-20.....	3
22	PAOZZ	5305012506583	34623	5592878	SCREW,TAPPING #10-24 X 1/2.....	1
23	PAOZZ	5305000680508	80204	B1821BH025C075N	SCREW,CAP,HEXAGON H 1/4-20 X 3/4...	1
24	PAOZZ	5310011023270	24617	2436161	WASHER,FLAT 1/4.....	4
25	PAOZZ	5305000687837	80204	B1821BH025C063N	SCREW,CAP,HEXAGON H 1/4-20 X 5/8...	2

END OF FIGURE